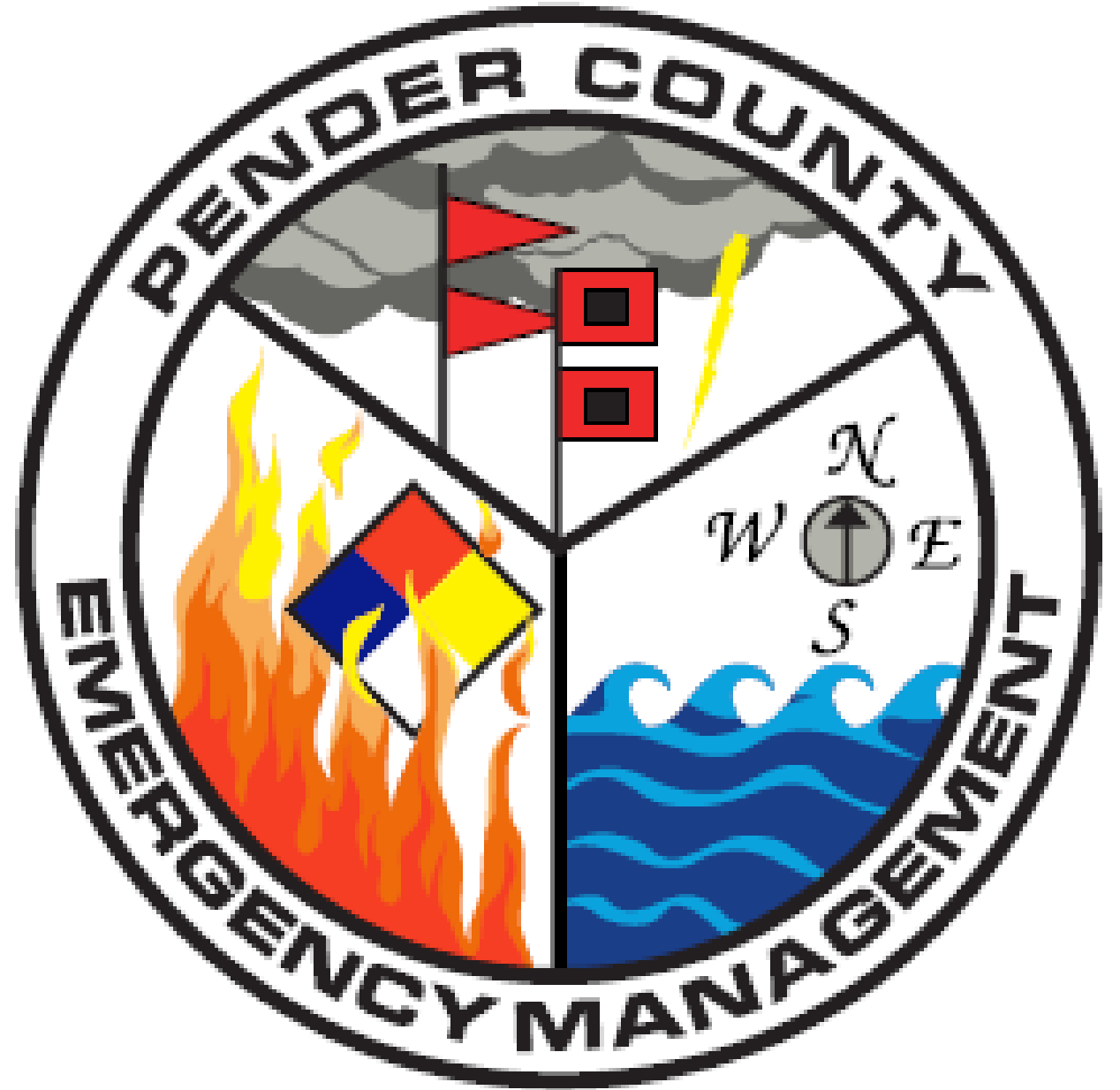


Pender County 2019 Tropical Update

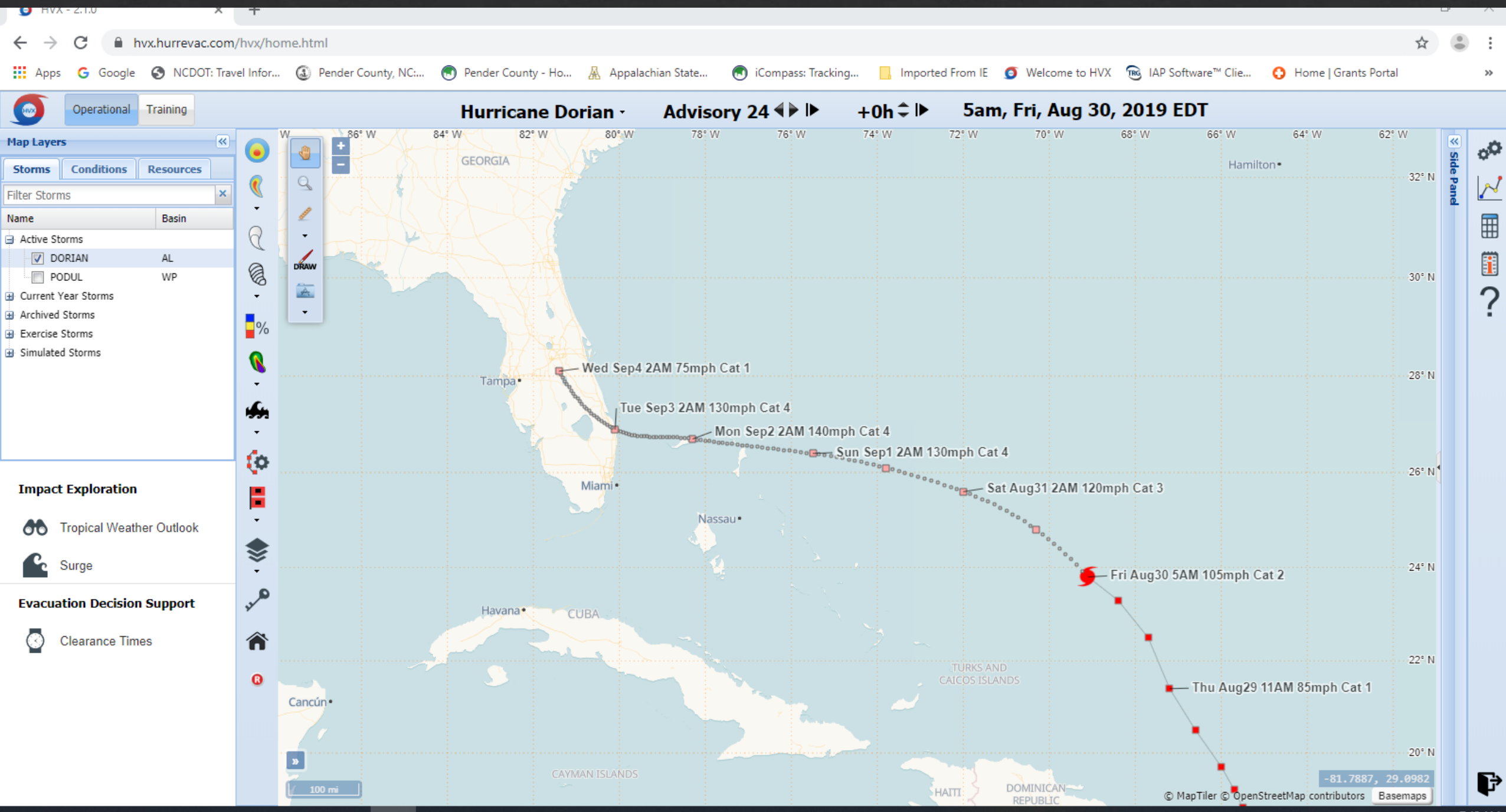
August 30, 2019

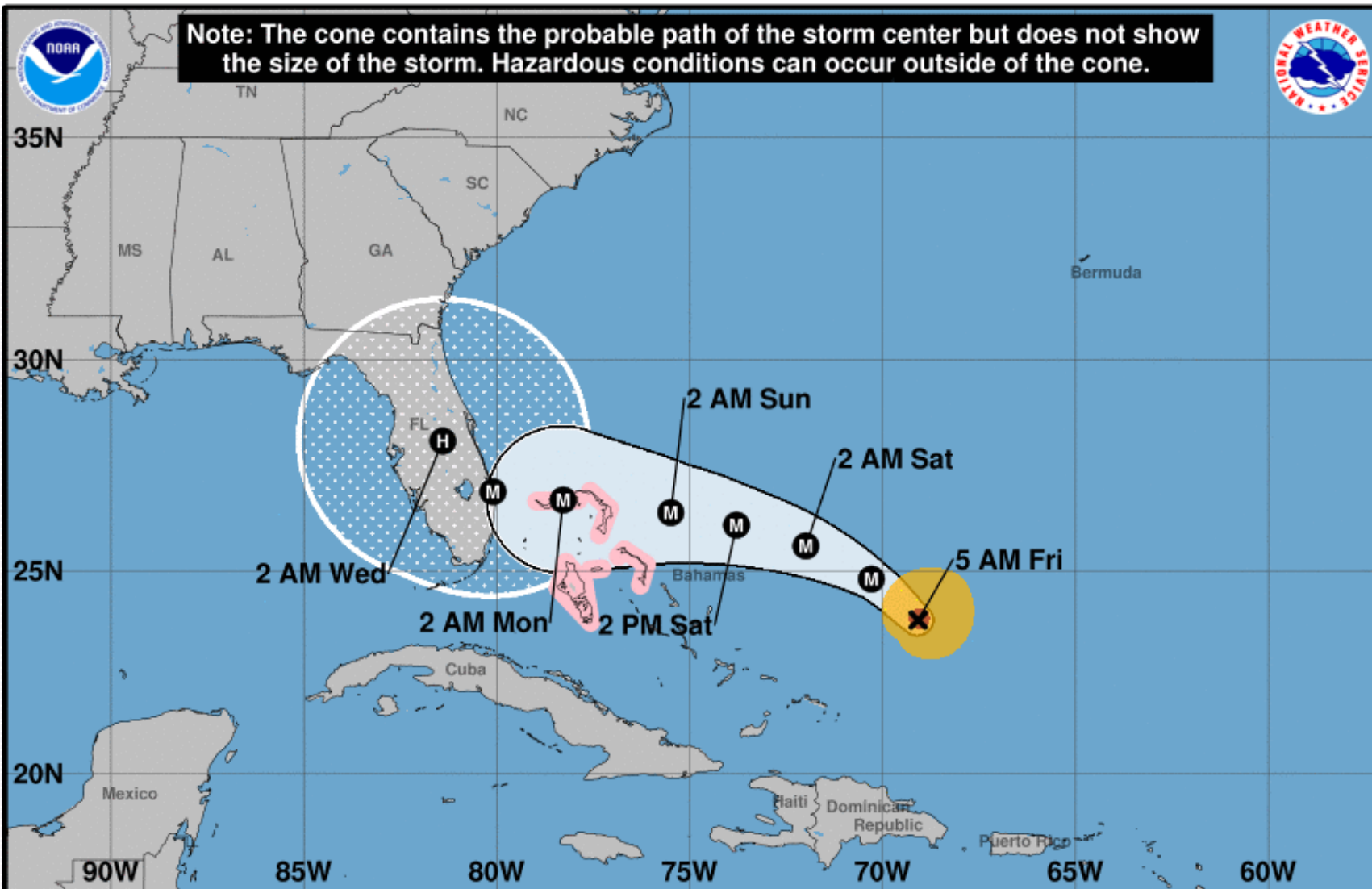
Hurricane Dorian

0500 Advisory



The New Hurrevac HVX





Hurricane Dorian
 Friday August 30, 2019
 5 AM AST Advisory 24
 NWS National Hurricane Center

Current information: x
 Center location 23.8 N 69.1 W
 Maximum sustained wind 105 mph
 Movement NW at 12 mph

Forecast positions:
 ● Tropical Cyclone ○ Post/Potential TC
 Sustained winds: D < 39 mph
 S 39-73 mph H 74-110 mph M > 110 mph

Potential track area:	Watches:	Warnings:	Current wind extent:
Day 1-3 Day 4-5	Hurricane Trop Stm	Hurricane Trop Stm	Hurricane Trop Stm

Hurricane Dorian Discussion Number 24
NWS National Hurricane Center Miami FL AL052019
500 AM AST Fri Aug 30 2019

There hasn't been a lot of new data since the Hurricane Hunter planes departed Dorian several hours ago. The convective pattern on infrared satellite imagery has been nearly steady state, although the latest Dvorak estimates from TAFB and SAB rose to T5.0/90 kt. These estimates, combined with the earlier aircraft data, support maintaining an initial intensity of 90 kt.

continued on next page...

Dorian's heading is very gradually turning toward the left, with the latest estimate northwestward, or 320 degrees at 10 kt. Dorian is now being steered between a mid-tropospheric high centered near Bermuda and a mid-/upper-level low located over the Bahamas. The high is expected to expand westward, with a blocking ridge becoming established over the western Atlantic during the next several days. With the exception of COAMPS-TC and HMON, the other reliable models are in excellent agreement through day 3, with Dorian turning westward south of the ridge and moving near or over the northernmost islands in the Bahamas Sunday and Monday. After day 3, steering currents collapse as a break develops in the ridge, and Dorian will likely slow down considerably as it approaches the Florida peninsula. There is more spread among the deterministic models and their ensemble members during that time, with disagreement on exactly when and where Dorian will turn northwestward and northward on days 4 and 5. That being said, the tracks of the simple and corrected consensus models on this cycle did not warrant much change to the official NHC forecast, with perhaps just a slight southward adjustment on days 3 and 4. The biggest concern will be Dorian's slow motion when it is near Florida, placing some areas of the state at an increasing risk of a prolonged, drawn-out event of strong winds, dangerous storm surge, and heavy rainfall.

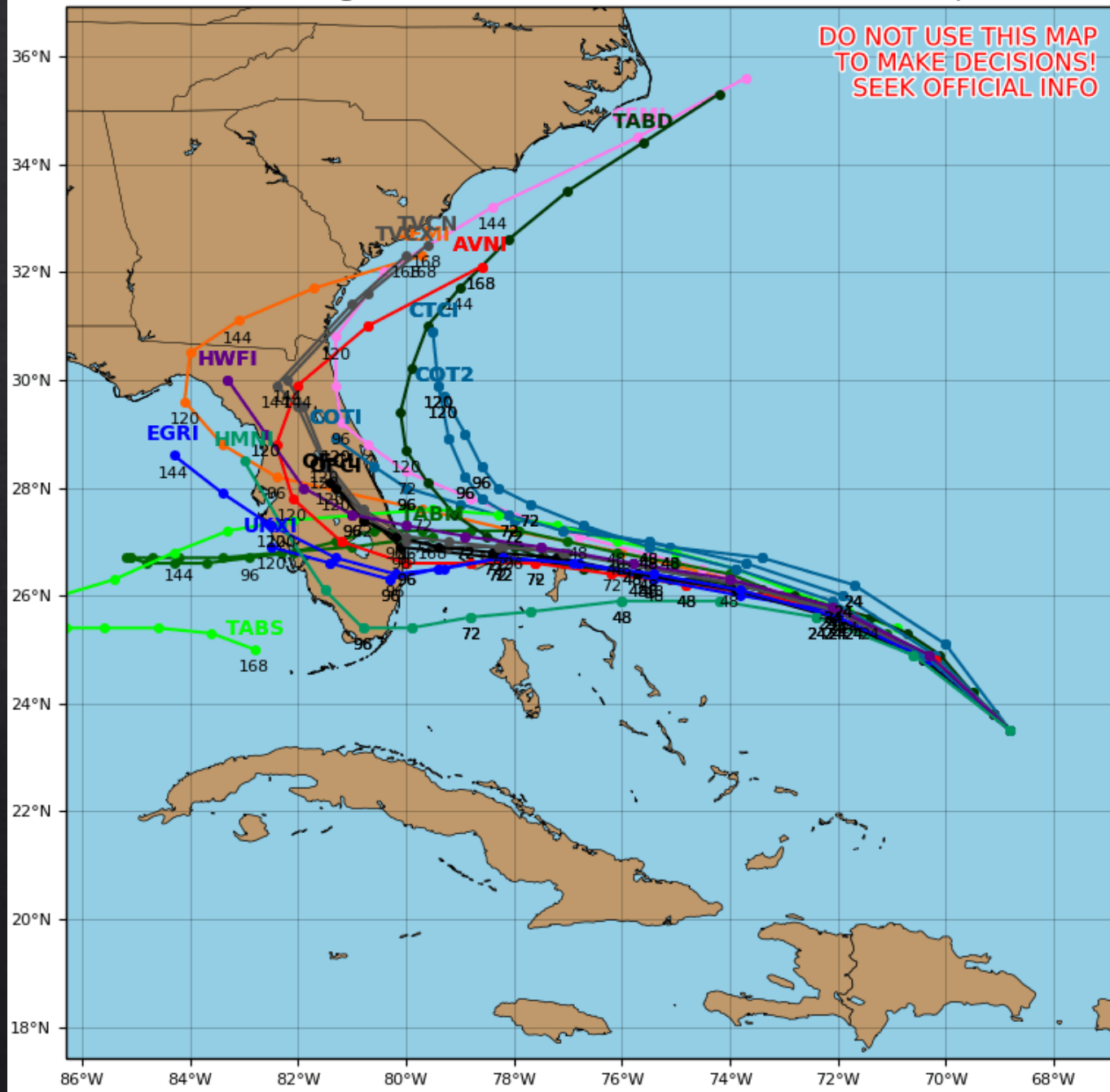
Continued on next page....

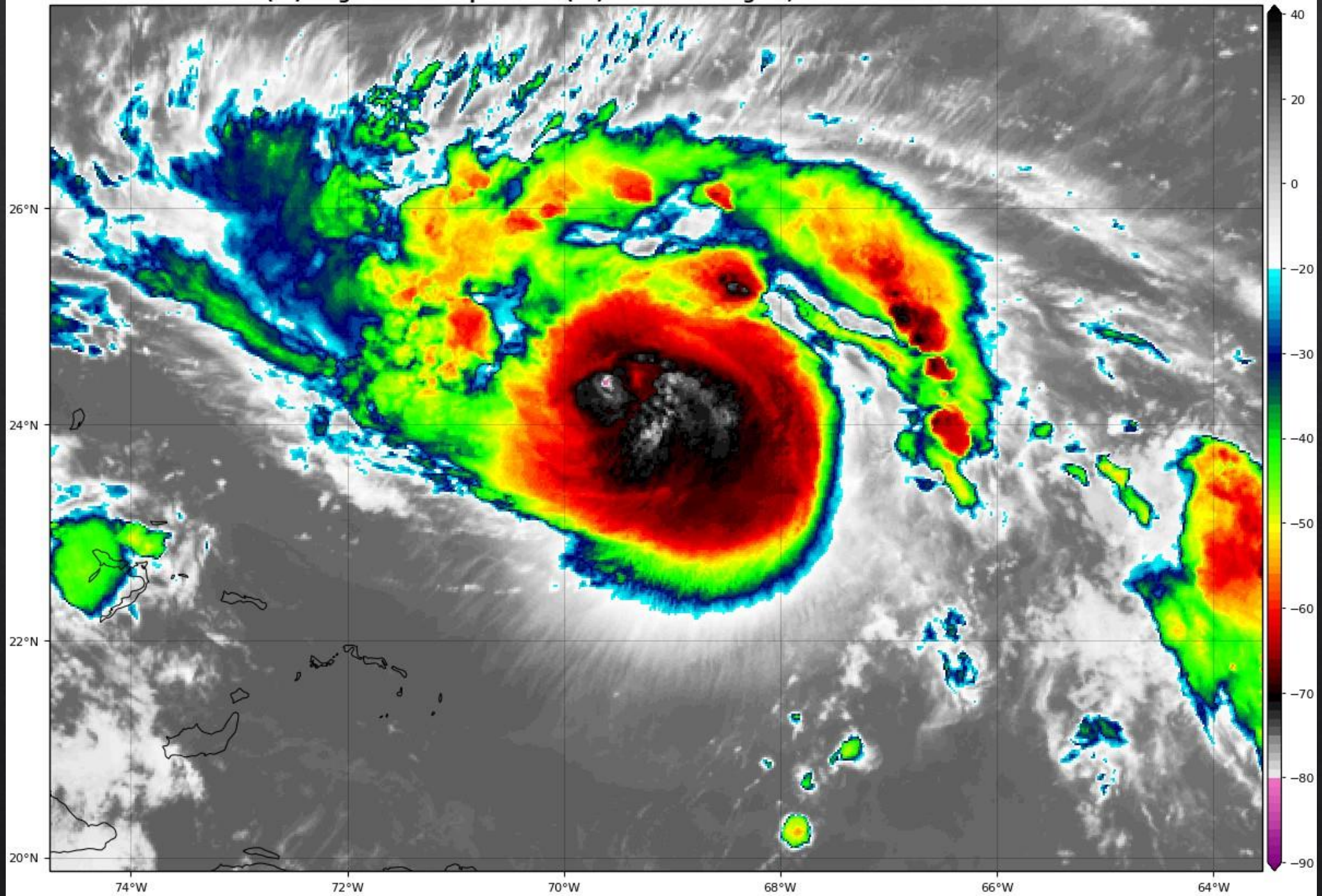
The upper-level low to the west of Dorian continues to impart some southwesterly shear over the hurricane, which has prevented it from strengthening rapidly. However, Dorian is expected to enter a more favorable upper-level environment during the next 24 hours, which should allow its structure to become more well developed. Although overall the environment ahead of the storm appears conducive for strengthening, some models (in particular the ECMWF) suggest that some northerly shear could come into play while Dorian moves through the northwestern Bahamas, and for that reason the NHC official intensity forecast is not quite as bullish as the HCCA, Florida State Superensemble, and HWRF models. Still, Dorian is forecast to become a dangerous major hurricane later and maintain that status as it heads for the northwestern Bahamas and the Florida peninsula.

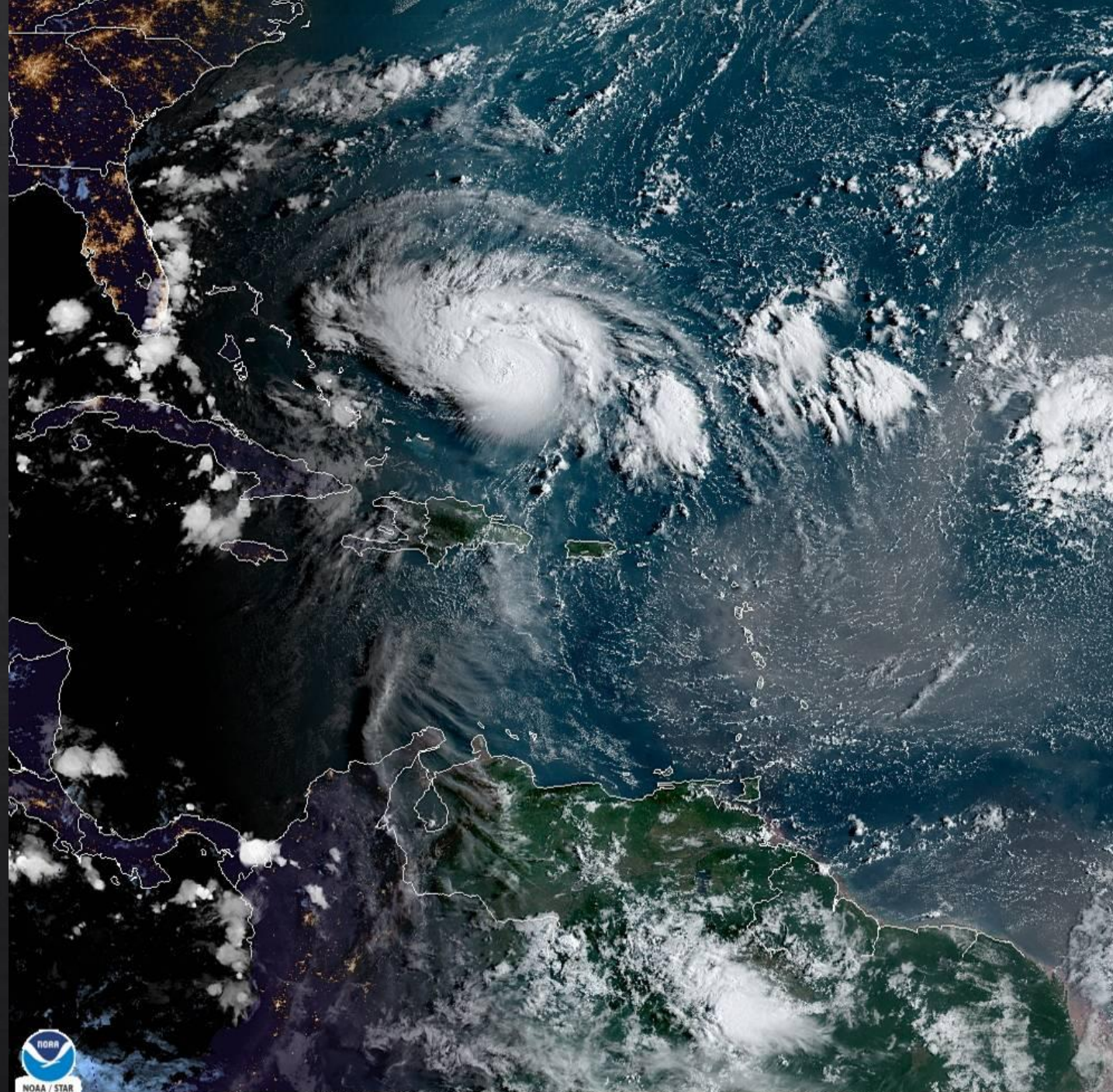
Hurricane DORIAN Model Track Guidance

Initialized at 06z Aug 30 2019

Levi Cowan - tropicaltidbits.com







NOAA / STAR

30 Aug 2019 11:30Z NOAA/NESDIS/STAR GOES-East GEOCOLOR