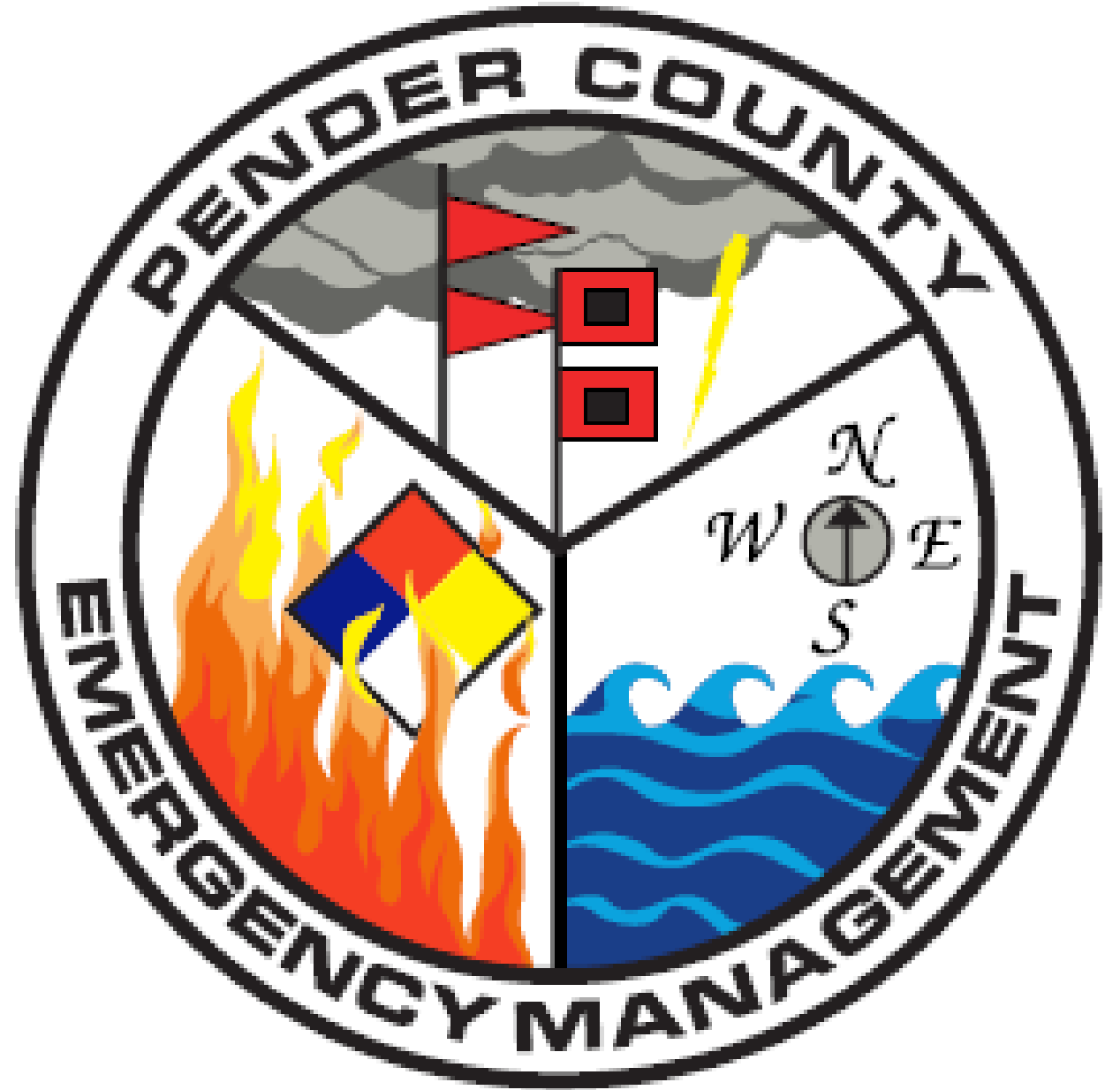


Pender County 2019 Tropical Update

July 31, 2019

Invest 95L





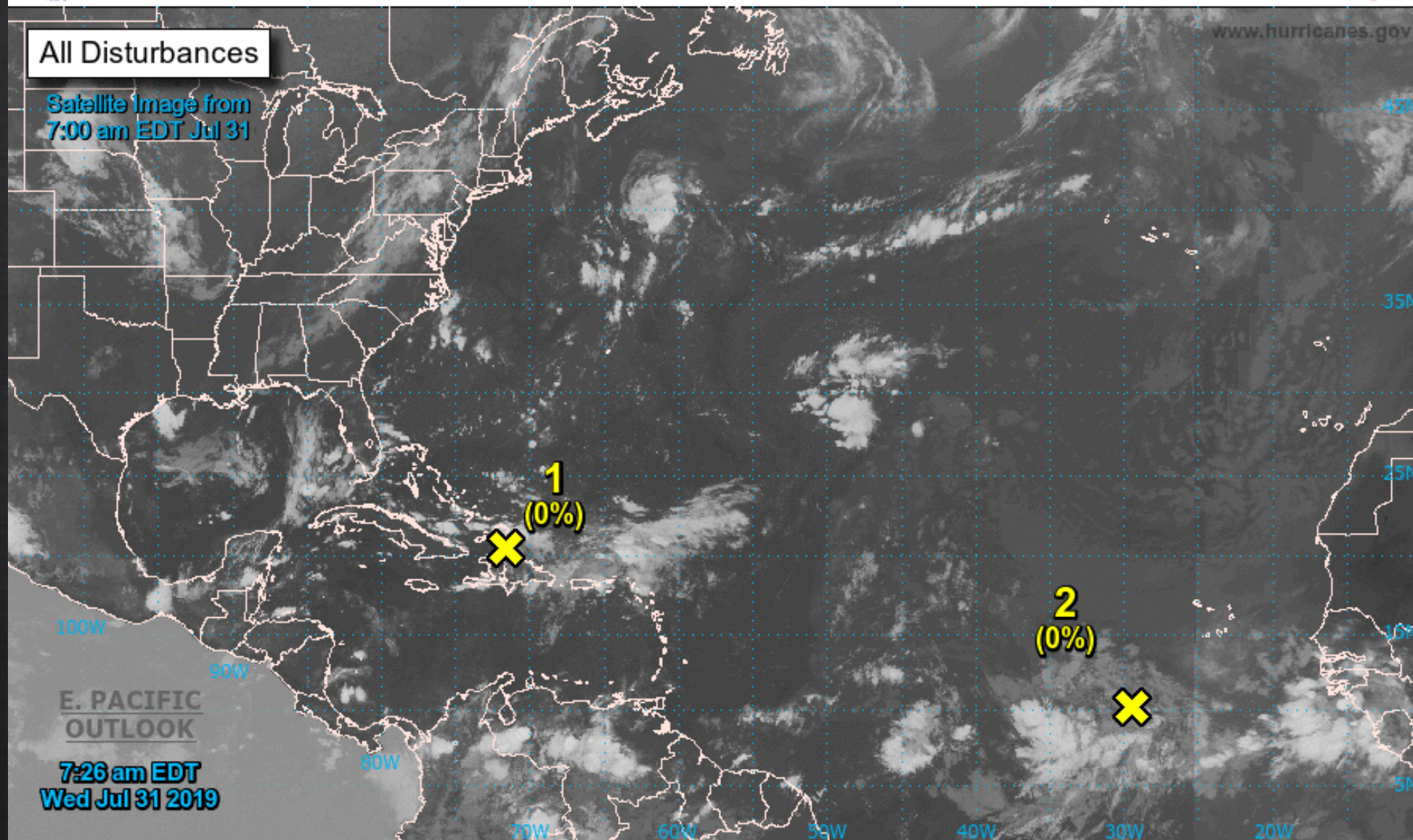
Two-Day Graphical Tropical Weather Outlook

National Hurricane Center Miami, Florida



All Disturbances

Satellite Image from
7:00 am EDT Jul 31



Current Disturbances and Two-Day Cyclone Formation Chance:

✕ < 40%

✕ 40-60%

✕ > 60%

Tropical or Sub-Tropical Cyclone:

○ Depression

⦿ Storm

⦿ Hurricane

⊗ Post-Tropical Cyclone or Remnants

Tropical Weather Outlook
NWS National Hurricane Center Miami FL
800 AM EDT Wed Jul 31 2019

For the North Atlantic...Caribbean Sea and the Gulf of Mexico:

1. A tropical wave continues to produce disorganized showers and thunderstorms stretching from Puerto Rico to the southeastern Bahamas. This disturbance is forecast to move northwestward to northward during the next several days, producing locally heavy rainfall over portions of the Greater Antilles, the Bahamas, and Florida. Conditions could become marginally conducive for development over the weekend while the system turns northeastward off the southeast U.S. coast.

* Formation chance through 48 hours...low...near 0 percent.

* Formation chance through 5 days...low...10 percent.

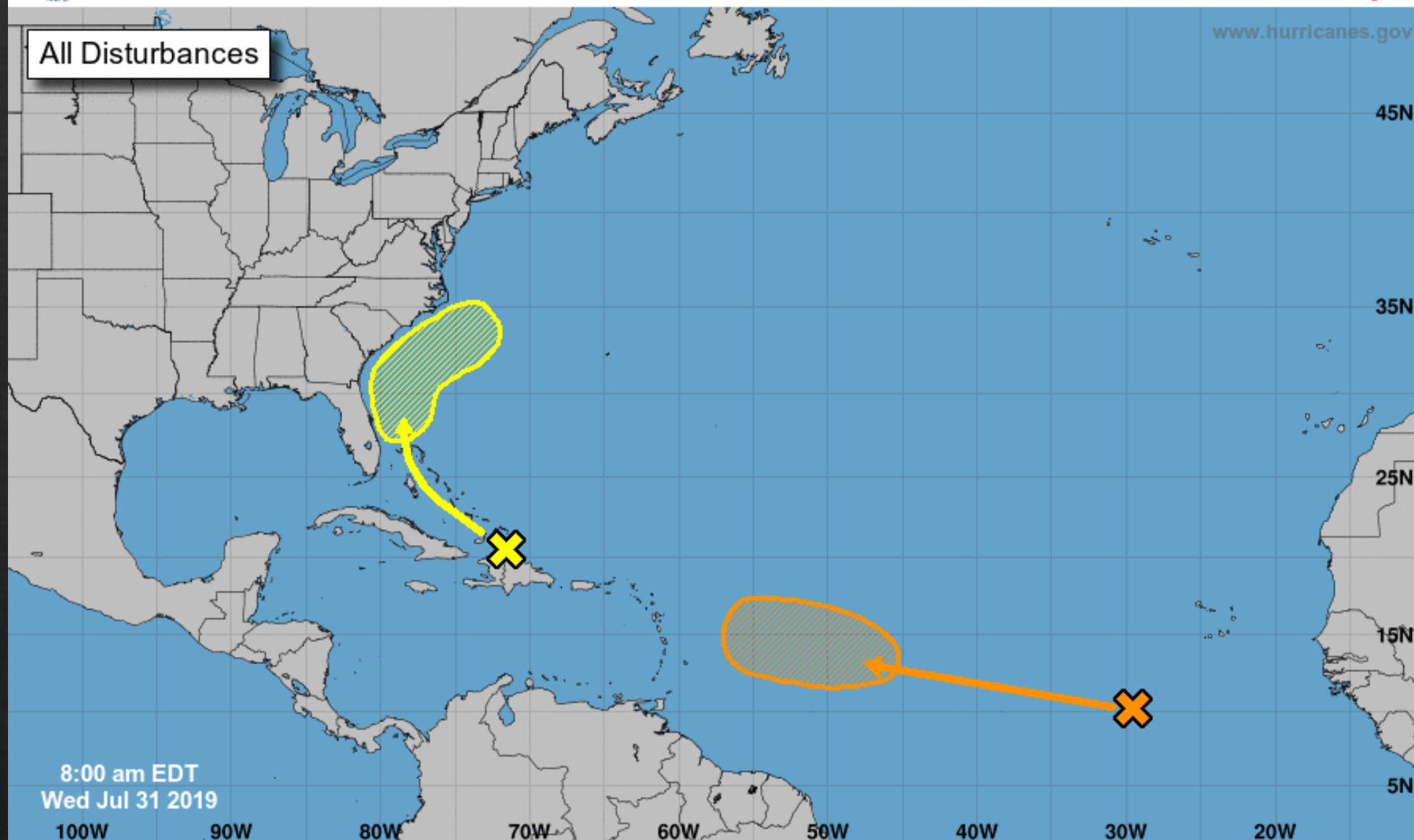
2. A tropical wave located several hundred miles southwest of the Cabo Verde Islands is producing widespread cloudiness and showers over the eastern tropical Atlantic Ocean. No significant development of this system is expected for the next few days while it moves westward at about 15 mph. Thereafter, upper-level winds are forecast to gradually become more conducive, and a tropical depression could form by early next week several hundred miles east of the Lesser Antilles.

* Formation chance through 48 hours...low...near 0 percent.

* Formation chance through 5 days...medium...50 percent.



All Disturbances



8:00 am EDT
Wed Jul 31 2019

Current Disturbances and Five-Day Cyclone Formation Chance:  < 40%  40-60%  > 60%

Tropical or Sub-Tropical Cyclone:  Depression  Storm  Hurricane

- ❌ Post-Tropical Cyclone or Remnants

Invest 95L Model Track Guidance

Initialized at 12z Jul 30 2019

Levi Cowan - tropicaltidbits.com

