



National Weather Service

Wilmington, NC



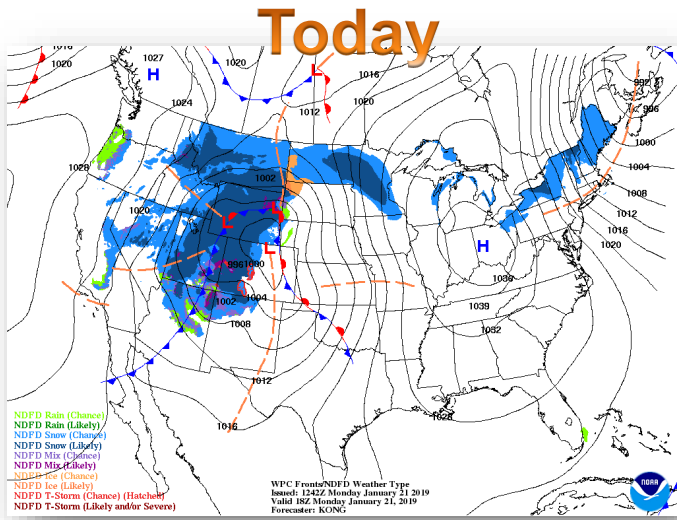
Outlook Period: **Mon, Jan 21 to Fri Jan 25, 2019**
 Time Issued: **10 AM, Mon Jan 21**

Prepared by: **Rachel Zouzas**

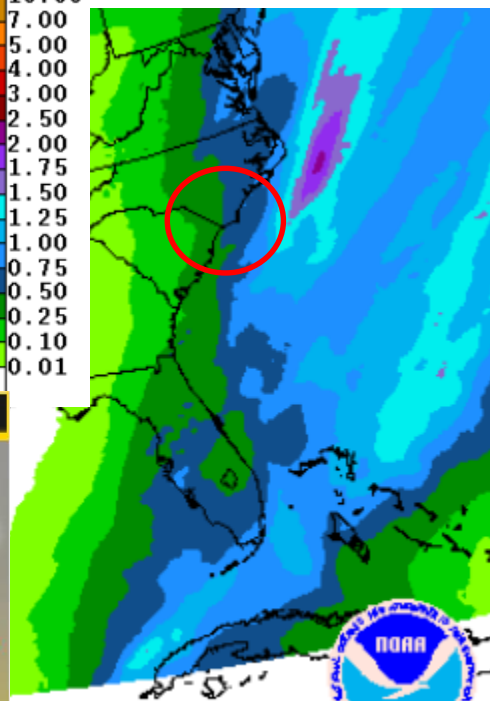
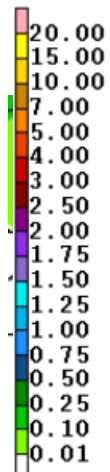
Cold Start and End to the Week . Warm-up and Rain for mid week.

Overview: Cold and dry high pressure will shift east by Wed allowing for a warmup. A storm system will impact the area with wet weather for Wed night into Thurs. Cold and dry weather will return by the weekend.

Impacts: Most places will receive up to a half inch to an inch of rain Wed night into Thu. Temps will swing from 10 degrees below normal and Tuesday, to 10 to degrees above normal by Wed and Thurs. Expect rough marine conditions mid week as strong southerly winds push seas up to 8 to 10 ft early Thur.



WPC 48-HR OPF
ISSUED: 0510Z MON JAN 21 2019
VALID: 12Z THU JAN 24 2019
THRU: 12Z SAT JAN 26 2019
FORECASTER: RAUSCH
DOC/NOAA/NWS/NCEP/WPC



| Today | Tue | Wed | Thu | Fri |
|-----------------------|-----------------------|------------------------|------------------------|-----------------------|
| | | | | |
| Breezy | | | | |
| 35° 0% N 17 | 44° 20% E 7 | 65° 80% S 12 | 66° 80% W 12 | 49° 80% W 7 |
| 20° | 34° | 56° | 34° | |

Wed night/ Thurs

Values will vary slightly across the area

For the latest updates, please visit our website and social media outlets: