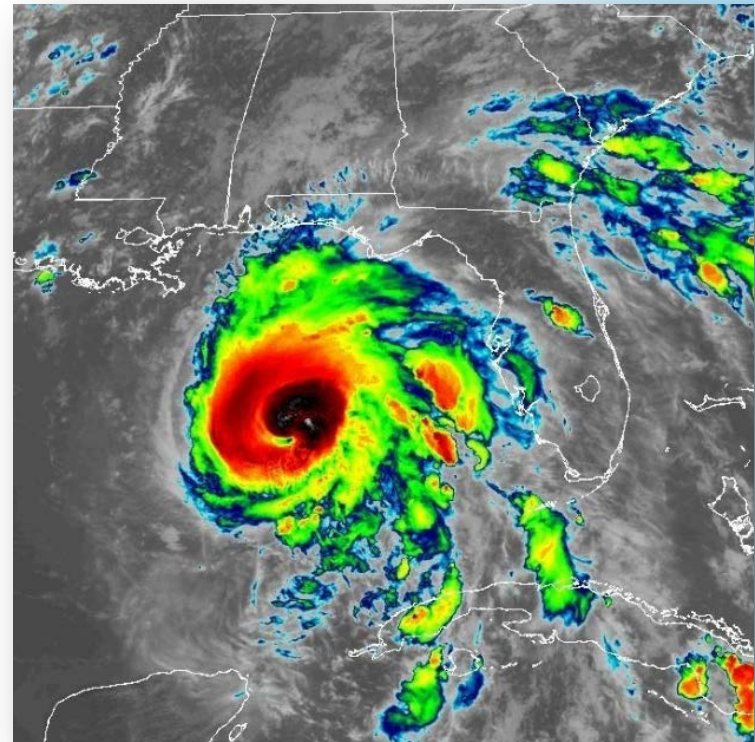


Hurricane Michael

Decision Support Briefing # 5
As of: 700 AM Wednesday Oct 10, 2018
Reid Hawkins, SOO






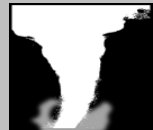

What has changed?

✓ Tropical Storm Warning is now in effect

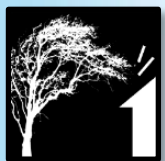
Situational Overview

- ✓ Tropical Storm Force winds are likely during Thursday. A **Tropical Storm Warning** is now in effect for all northeast SC counties and southeast NC counties.
- ✓ Basin rainfall with averages of 2 to 5 inches with locally higher amounts is possible. A **Flash Flood Watch** is now in effect for all northeast SC counties and southeast NC counties.
- ✓ Coastal flooding of 2 to 3 feet AGL inundation is possible, especially with each high tide Thursday. Areas where the shoreline has already become weakened from Florence, as well as other coastal flood prone areas are at the most risk.
- ✓ Residents and business are advised to secure tarps on any roofs damaged last month by Florence to be better prepared for gusty winds and heavy rain.

Main Points

Hazard	Impacts	Location	Timing
Wind 	<p>Elevated wind impacts are expected since the ground is saturated and weakened trees may fall as a result</p>	<p>northeast SC and southeast NC</p>	<p>Increasing to TS force during Thu, improving late Thu night</p>
Storm Surge/ Inundation 	<p>Moderate storm surge impacts possible with inundation up to 3 ft in some areas</p>	<p>All coastal areas, but especially the beach areas already weakened by Florence's surge</p>	<p>Increasing through Thursday with each high tide</p>
Flooding Rain 	<p>Flooding impacts are likely, especially since antecedent ground conditions are still saturated in many locations</p>	<p>northeast SC and southeast NC</p>	<p>Threat of heavy rain increasing Wednesday, but especially Thursday</p>
Tornado 	<p>Some tornadoes are possible</p>	<p>northeast SC and southeast NC</p>	<p>Thursday</p>
Marine 	<p>Hazardous maritime and rough surf conditions along with rip currents</p>	<p>Surf zone and adjacent Atlantic waters</p>	<p>Increasing through Thursday</p>

Potential Impacts



Wind: Confident

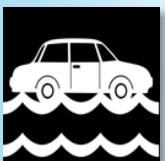
None

Elevated

Moderate

High

Extreme



Surge/Inundation: Limited Confidence

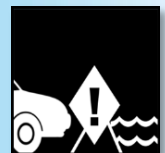
None

Elevated

Moderate

High

Extreme



Inland Flooding: Confident

None

Elevated

Moderate

High

Extreme



Tornado: Confident

None

Elevated

Moderate

High

Extreme



Marine: Confident

None

Elevated

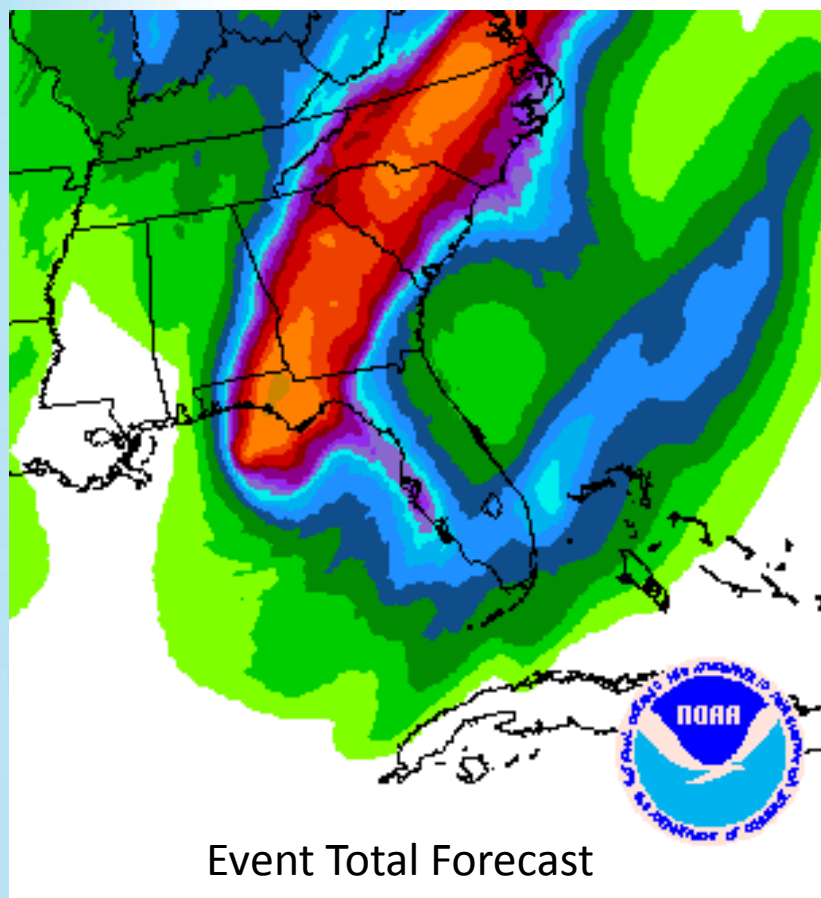
Moderate

High

Extreme



Rainfall Projections



- ✓ Rainfall amounts are expected to average 2 to 5 inches with locally higher amounts possible especially west of Interstate 95
- ✓ The ground remains saturated in many locations, & as a result it will not take as much rainfall to cause flooding
- ✓ The risk for flooding, especially in/near prone, low-lying areas will increase Wed into Thu
- ✓ Some area rivers could reach minor or moderate flood by the end of the week or this weekend including: Lumber, Pee Dee, Little Pee Dee, Black Creek, and Cape Fear

Convective Outlook for Wednesday & Thursday



SPC Day 1 Convective Outlook valid 8 AM Wed
through 8 AM Thu

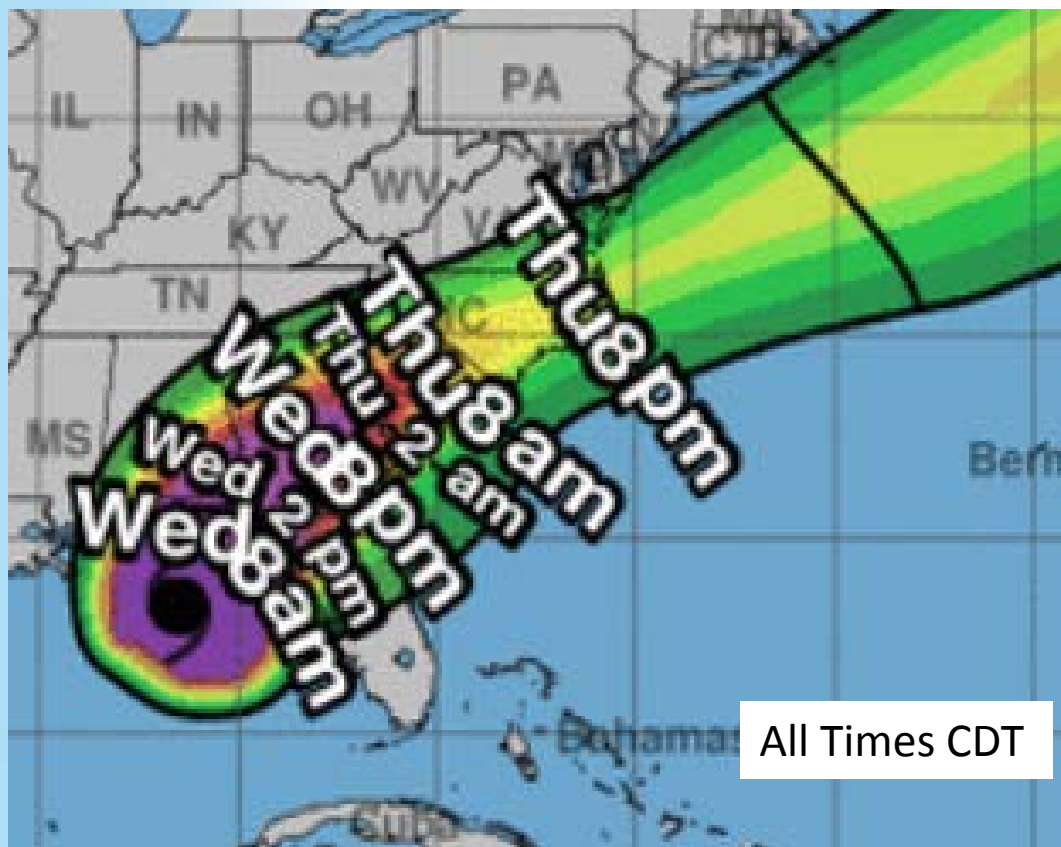


SPC Day 2 Convective Outlook valid 8 AM Thu
through 8 AM Fri

✓ A few tornadoes are possible as the storm moves by the area

✓ The risk is greatest across southern SC, southern GA, and northern FL Wednesday (left image), but the focus shifts into the eastern Carolinas Thursday (right image)

Most Likely Arrival Time of TS Force Winds



✓ Based on the latest track, TS force winds are most likely to arrive during Thursday morning for northeast SC

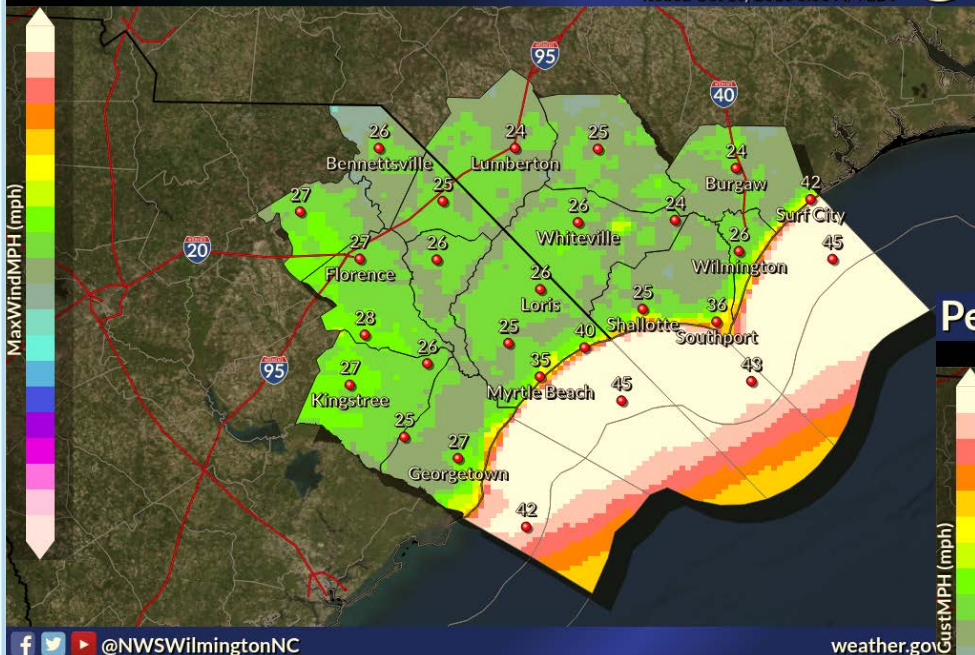
✓ Based on the latest track, TS force winds are most likely expected to arrive by early Thursday afternoon for southeast NC

✓ The storm is expected to be moving quickly across the Carolinas and winds will improve by Thursday evening for northeast SC and Thursday night for southeast NC

Peak Sustained Wind and Peak Wind Gust Swath

Peak Sustained Wind Swath

Weather Forecast Office
Wilmington, NC
Issued Oct 10, 2018 6:55 AM EDT

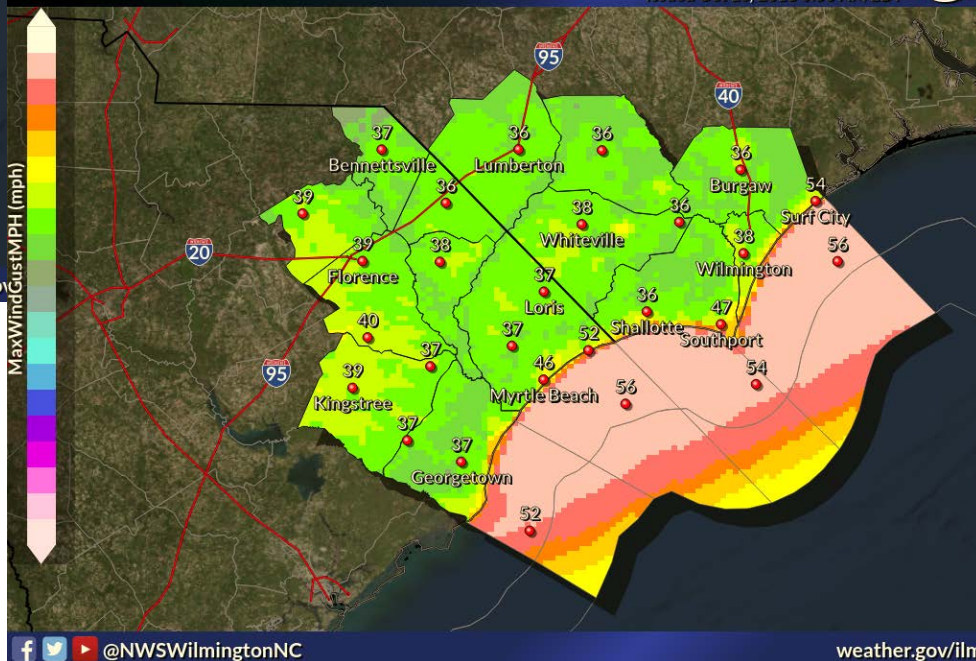


✓ These forecast values are highly track dependent

✓ Sustained winds (left image) of 25 to 45 mph are possible, highest along the coast

Peak Wind Gust Swath

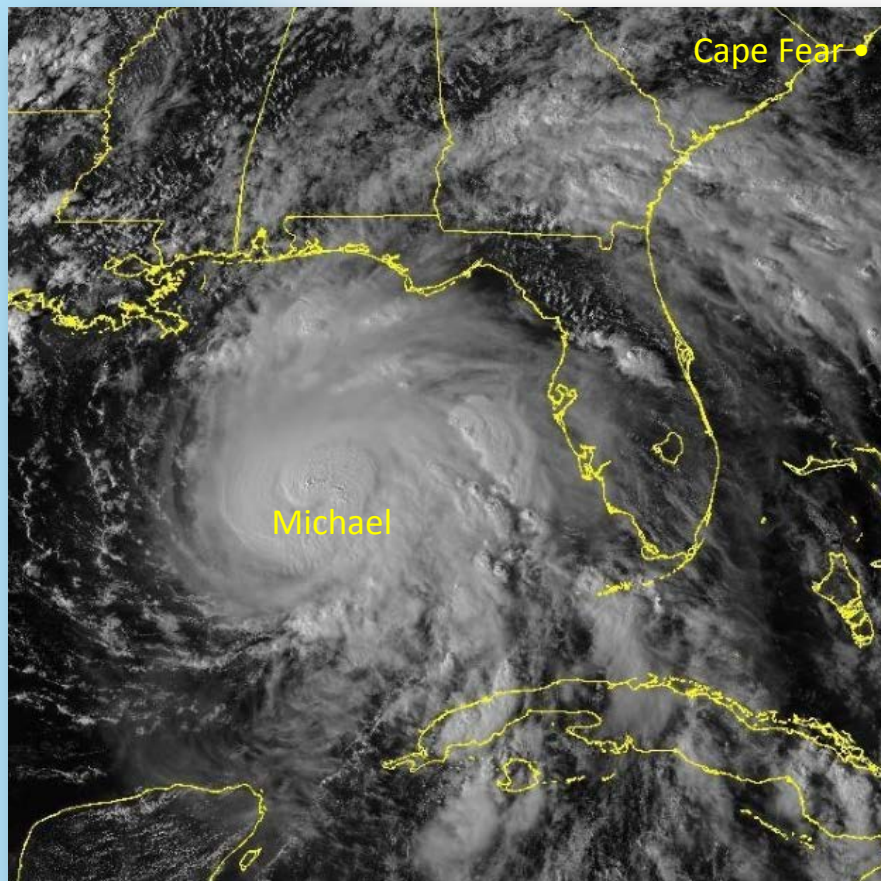
Weather Forecast Office
Wilmington, NC
Issued Oct 10, 2018 6:56 AM EDT



✓ Wind gusts (right image) 35 to 60 mph are possible, highest along the coast

✓ Trees weakened by Florence could topple from these winds causing additional power outages

Latest Information: Hurricane Michael



Hurricane Michael GOES-East Band 02, 447 PM Tue Oct 9, 2018

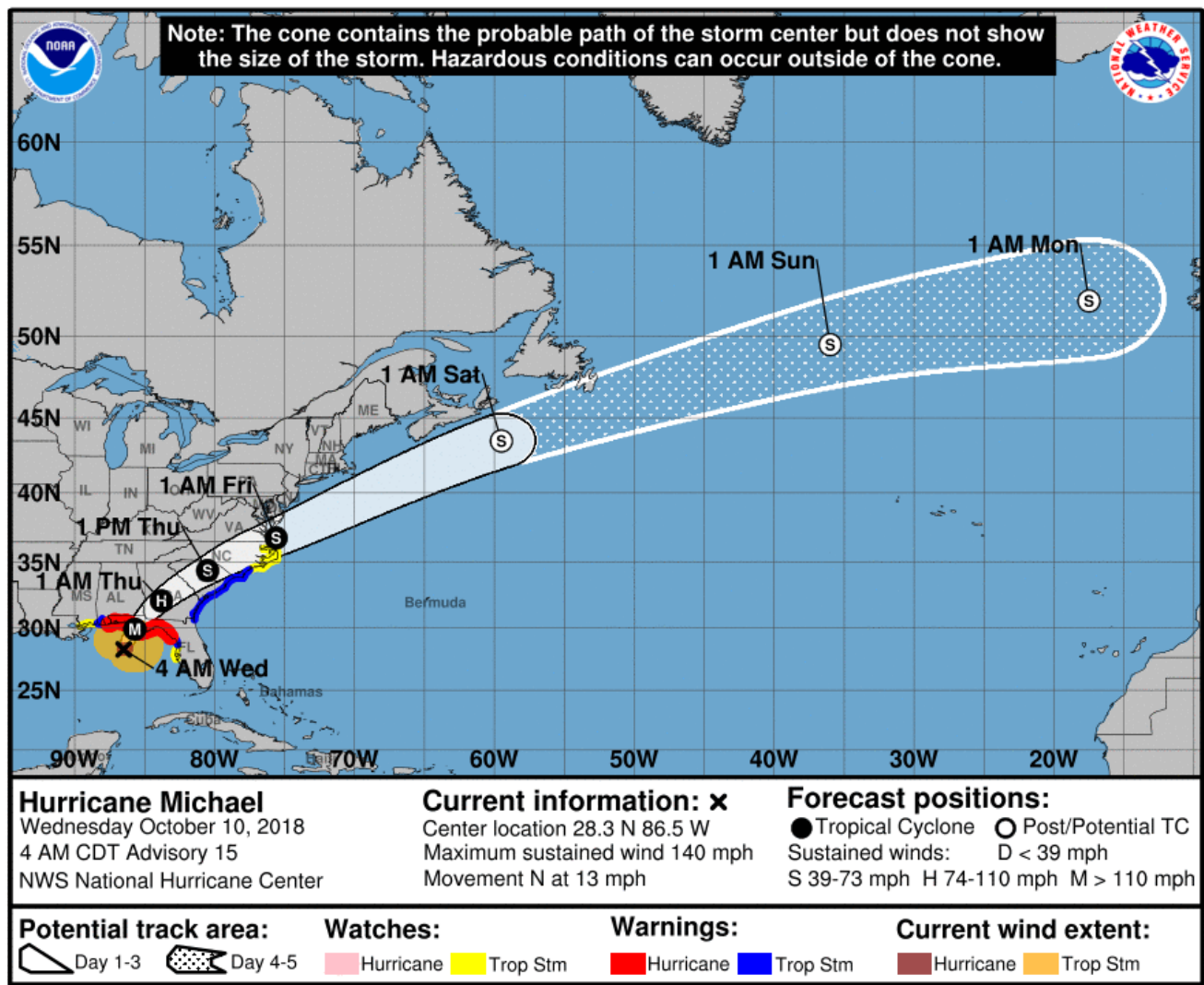
OVERVIEW:

- ✓ Some additional strengthening is possible prior to landfall along the Gulf coast
- ✓ The storm will weaken after landfall, but will produce impacts across the Carolinas, especially during Thursday






NHC Advisory #13: 5 AM EDT October 10, 2018

Max Winds:	140 MPH (Category 4)
Location:	140 Mi. SW of Apalachicola, FL
Movement:	North at 13 MPH
Pressure:	943 MB (27.85 inches)

Official NHC Track Information



Key Points

-  Heavy rainfall may lead to flooding for some areas, especially poor drainage prone locations. Rainfall amounts will average 2 to 5 inches with locally higher amounts possible.
-  Residences or businesses that suffered roof damage from Florence need to secure tarps to prepare for heavy rainfall and the possibility of tropical storm force winds. Also, secure any loose objects such as garbage cans, lawn furniture, etc.
-  Also, since the ground is saturated in many areas it will not take as much wind to topple weakened trees which could cause additional power outages.
-  Coastal flooding of 2 to 3 feet AGL inundation is possible, especially with each high tide. The highest risk for storm surge will occur Thursday, and vulnerable low spots along the beaches or those locations where the shoreline was weakened from Florence are at the greatest risk.
-  A few tornadoes are possible as well, especially during Thursday. Be prepared to seek shelter if Tornado Warnings are issued for your area.

Contact and Next Briefing Information



Next Briefing

When: By 6 M on Wed Oct 10 2018

Briefing Webpage:

<http://weather.gov/ilm/briefing>



Web:

<http://weather.gov/ilm>



Twitter:

[@NWSWilmingtonNC](https://twitter.com/NWSWilmingtonNC)



Facebook:

[NWSWilmingtonNC](https://www.facebook.com/NWSWilmingtonNC)

Disclaimer: *The information contained within this briefing is time-sensitive, do not use after 4 PM Wed Oct 10 2018*

